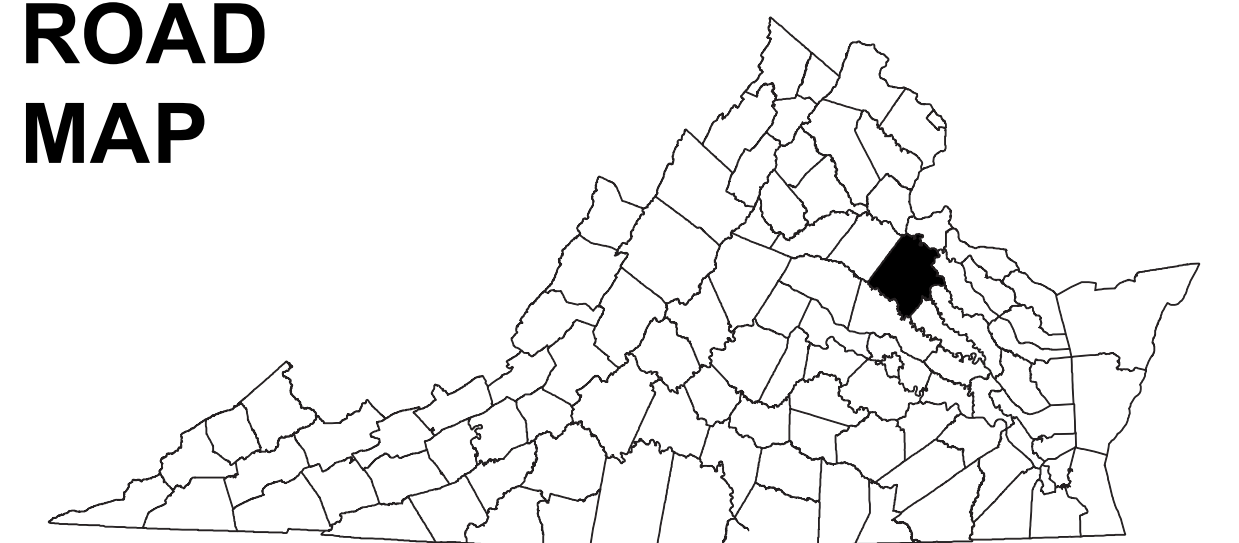


COUNTY ROAD MAP



SPOTSYLVANIA COUNTY

ROAD CLASSIFICATIONS

- Frontage Road
- Secondary Route
- State Route
- U.S. Route
- Urban Road
- LightSurface
- DividedHwy/Interstate
- AllWeatherSurface
- Unsurfaced
- otherSurface
- BikeRoutes
- AppalachianTrail
- Scenic Roads

MISCELLANEOUS

- Schools
- Seaports
- Park_RideLots
- AIRPORTS**
- Commercial
- General
- Military

RAILROADS

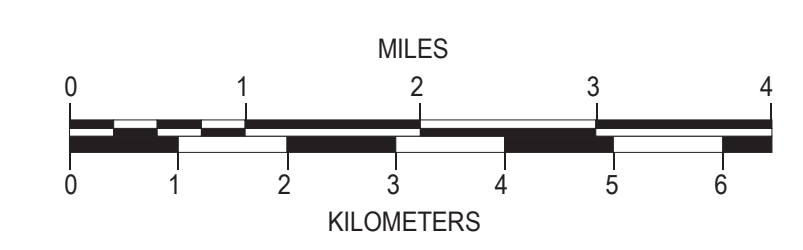
- Metro
- VARailroads
- Park_N_Ride

BOUNDARIES

- MilitaryAreas
- MagisterialDistricts
- Incorp_Areas
- Natural_LandCover

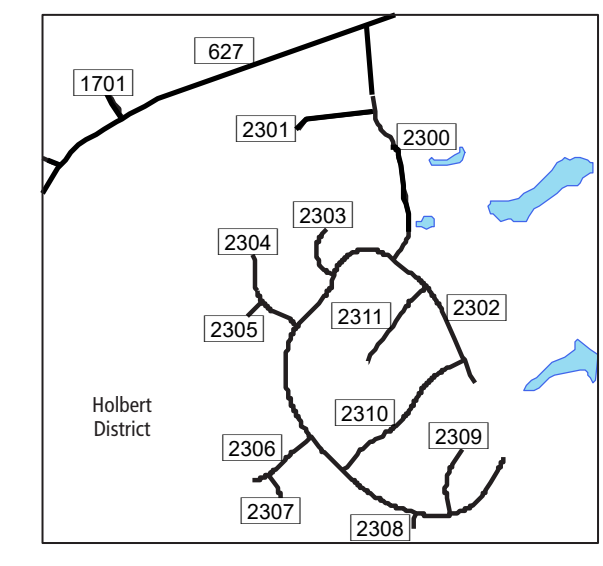
Additional ROAD CLASSIFICATION (Post 2019)

Hard-surface

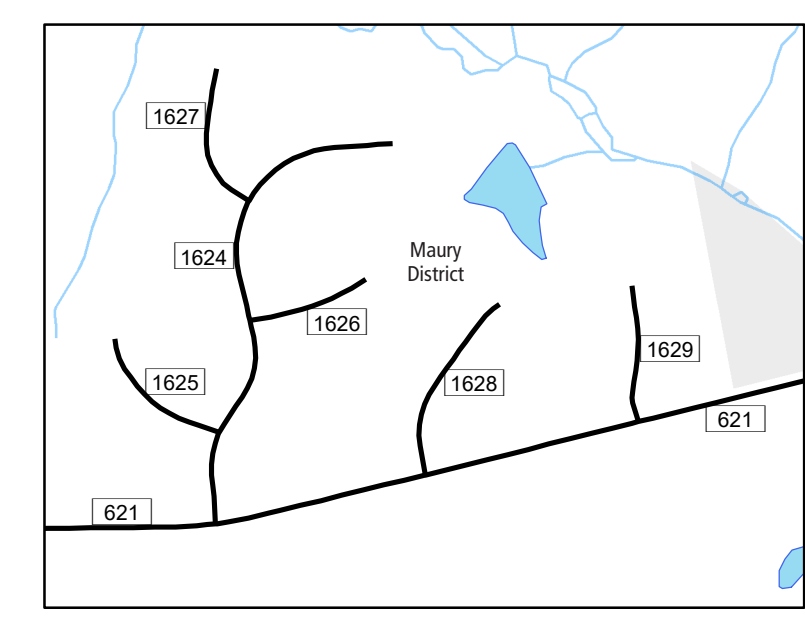


The accuracy or completeness of this map is not guaranteed or warranted. Map depicts state-maintained highway network as of May 1, 2021. Copyright © 2021 by Commonwealth of Virginia Department of Transportation, All Rights Reserved

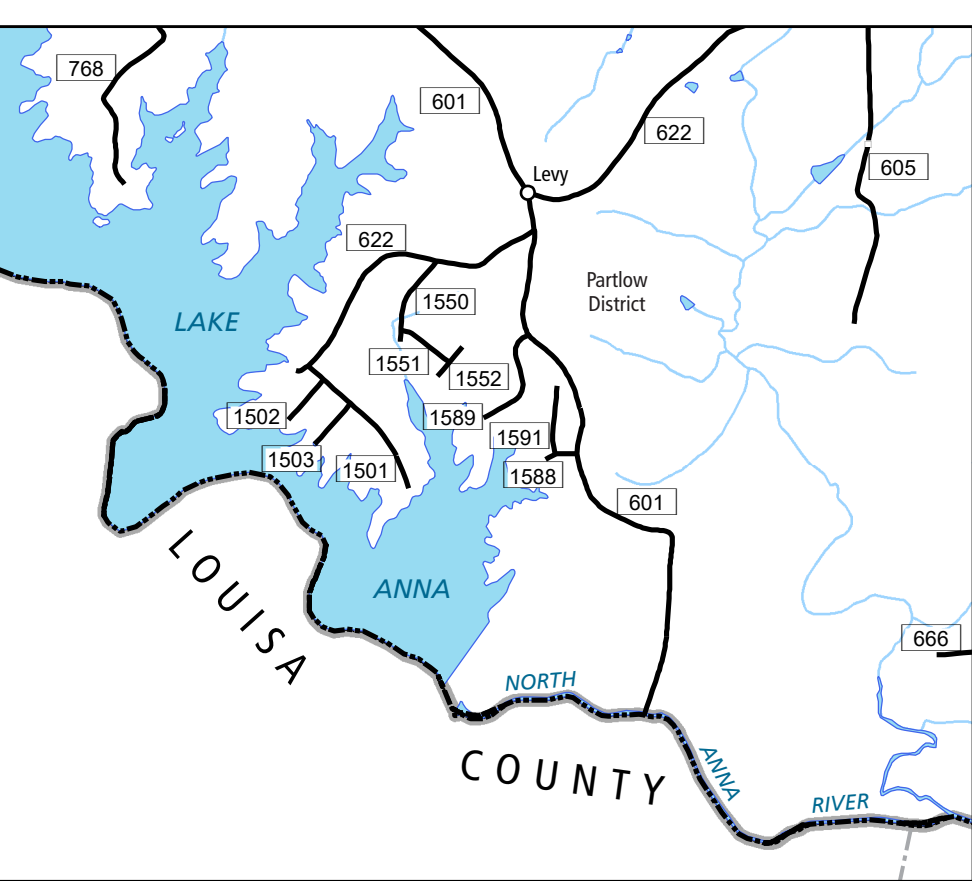
AN INVENTORY OF STATE MAINTAINED ROADS



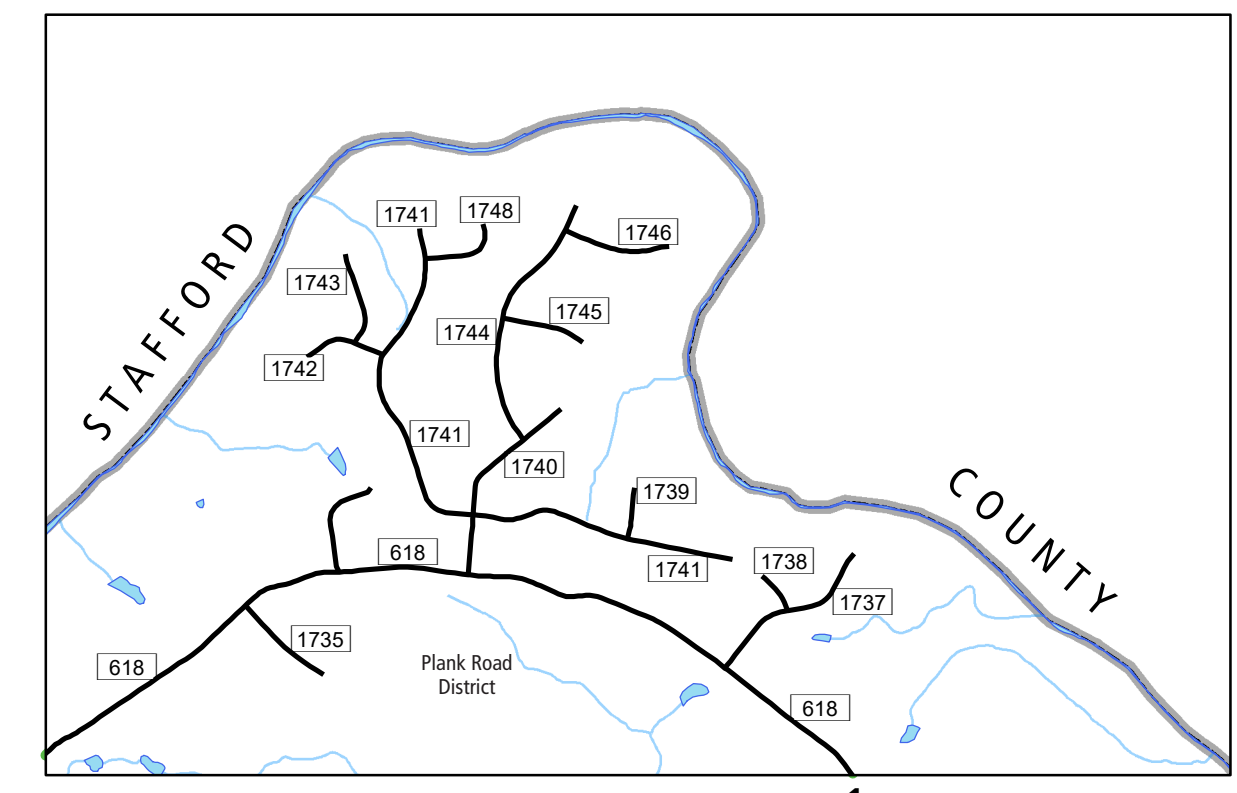
10
AREA SE OF NI RIVER RES.
(four times map scale)



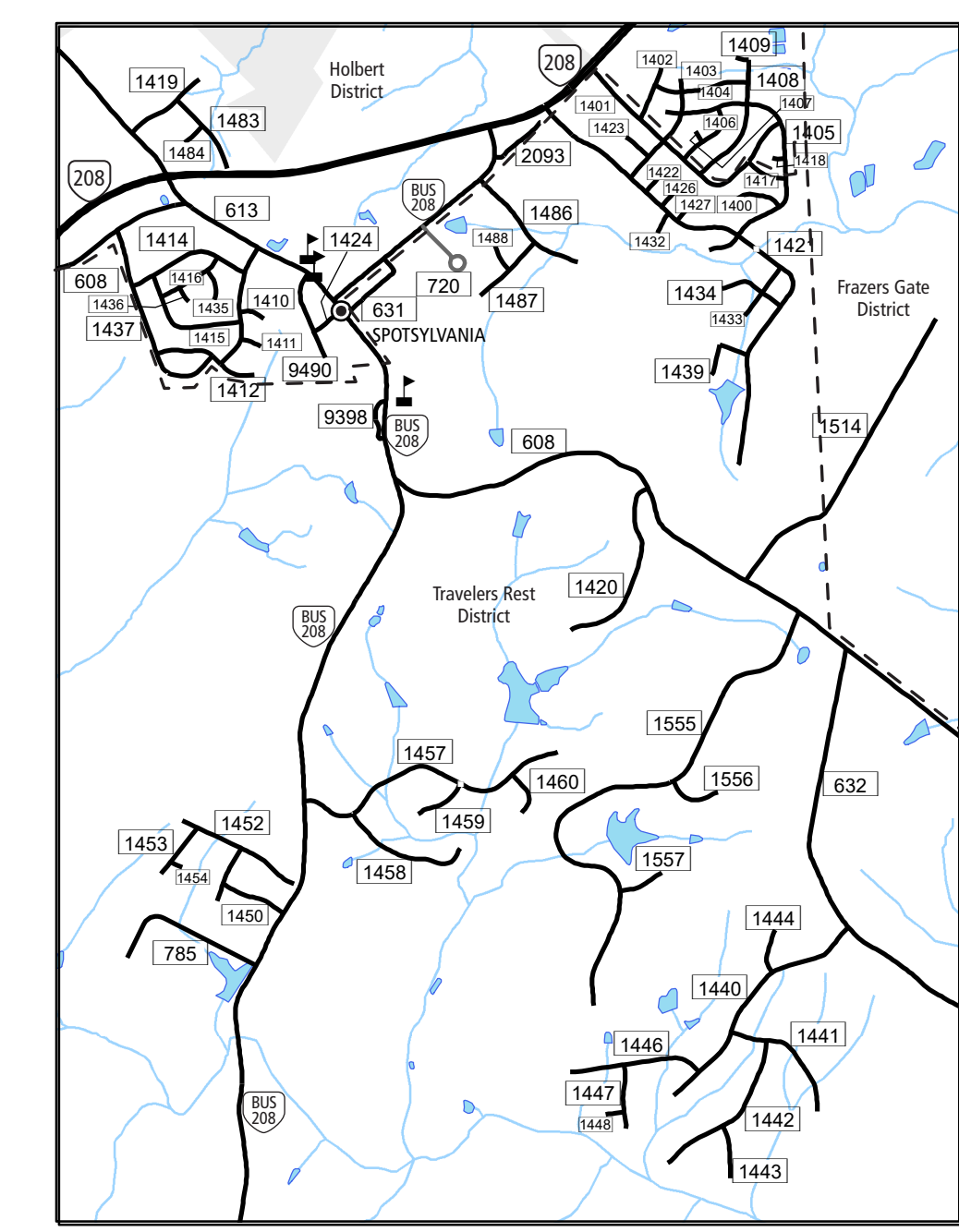
2
SIX LAKES WEST AREA
(four times map scale)



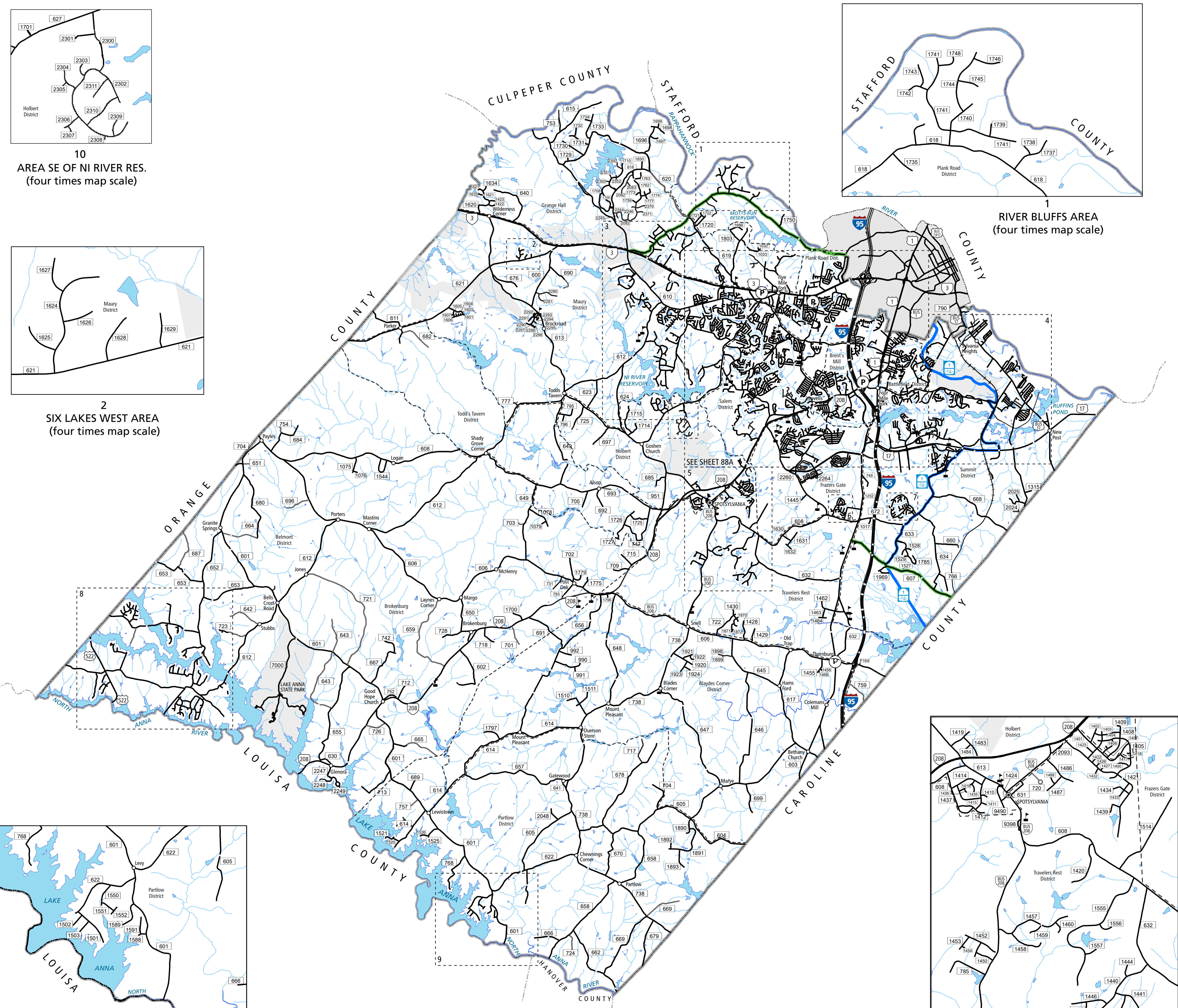
8
VALENTINE WOODS AREA
(four times map scale)



1
RIVER BLUFFS AREA
(four times map scale)



5
SPOTSYLVANIA AREA
(four times map scale)



TOTAL PRIMARY MILEAGE IN COUNTY 12/31/20: 71.05

SECONDARY MILEAGE TABULATION

TYPE	7/1/1932	7/1/1934	7/1/1941	TYPE	12/31/1950	12/31/1960	12/31/1970	12/31/1980	12/31/1990	12/31/2000	12/31/2015	12/31/2020
BIT SUR_PAVED	0.00	17.85	65.93	HARD SURFACE	140.69	228.35	277.82	359.25	451.12	584.04	728.24	766.82
GRAVEL_SOIL.ETC.	120.27	187.53	149.48	ALL WEATHER SURFACE	12.43	27.24	38.03	32.28	29.45	29.85	9.52	0.00
GRADED & DRAINED	60.60	42.60	62.10	LIGHT SURFACE	168.86	133.69	67.97	53.67	33.61	29.51	13.71	0.00
UNIMPROVED	85.60	25.94	12.66	UNSURFACED	15.11	1.60	1.89	0.00	0.00	0.00	0.00	7.95
TOTAL MILEAGE	266.47	273.92	290.17	TOTAL MILEAGE	337.09	370.88	385.71	445.20	514.18	643.40	751.55	751.55