

PROJECT UPDATES

ARLINGTON COUNTY ▶▶▶



*Pictured: Under Construction—
I-66 Rosslyn Tunnel Rehabilitation*

Under Construction

21st Street North over I-66 Bridge Rehabilitation

Resurfacing the concrete bridge deck, closing deck joints, repairing concrete piers and abutments, and replacing bearings. The bridge was built in 1980. The project is scheduled for completion in late 2024.

Estimated cost: \$4.1 million

Boundary Channel Drive at I-395 Interchange Improvements

Reducing underutilized roadway capacity on Boundary Channel Drive to construct a twelve-foot-wide westbound shared-use path and an eight-foot-wide eastbound sidewalk. The half-mile shared-use path will create a new link between the Mount Vernon Trail to the Pentagon and Long Bridge Park

by tying into the existing path that parallels the southbound George Washington Memorial Parkway ramp to southbound I-395. Other project improvements include installing roundabouts just west and east of I-395, reconfiguring the ramps between I-395, Boundary Channel Drive and Long Bridge Drive, and adding crosswalks along Boundary Channel Drive and Long Bridge Drive. The project is scheduled for completion in early 2024.

Estimated cost: \$19.6 million

I-66 Rosslyn Tunnel Rehabilitation

Removing the existing tunnel ceiling to improve long-term maintenance; upgrading electrical systems; installing a new fireproofing system; repairing steel beams, abutment, and pier concrete and joints; cleaning and repairing bearings; and replacing the tunnel lighting system. Completion is scheduled for mid-2025.

Estimated cost: \$37.7 million



Above: Under Construction — Boundary Channel Drive at I-395 Interchange Improvements

I-395/Route 1 Southbound Exit 8C Bridge Repairs

Retrofitting and spot painting structural steel, replacing the catcher beam system, reconstructing the deck expansion joint, and installing a preformed joint seal. The bridge was built in 1976 and rehabilitated in 1999. The project is scheduled for completion in fall 2023.

Estimated cost: \$4 million

South Abingdon Street over I-395 Bridge Rehabilitation

Resurfacing the concrete bridge deck, closing deck joints, repairing concrete piers and abutments, adding protective concrete barriers adjacent to piers, extending and adding concrete in-fill walls between piers, and replacing bearings and reconstructing bearing seats. The existing sidewalks on both sides of the bridge will remain and the bridge bike lanes

are being restriped as part of the project. The bridge was built in 1970 and rehabilitated in 1994. The project is scheduled for completion in late 2024.

Estimated cost: \$8.2 million

Coming Soon

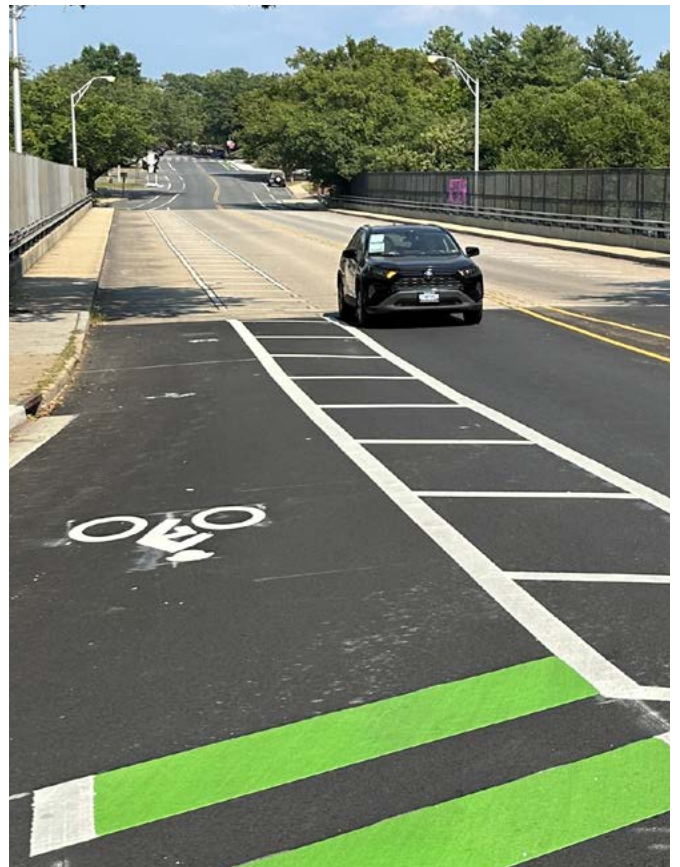
Parking Garage Repairs over I-66

This project will repair and rehabilitate the three-story parking garage over I-66 between Stafford Street and Quincy Street near Washington-Liberty High School. Improvements include garage platform and ramp repairs with joint replacement, repairs to beams and columns, and partial removal of the elastomeric bearing sheets. The garage was built in 1982. Construction is scheduled to begin in fall 2023.

Estimated cost: \$3.9 million



Above: Under Construction — 21st Street North over I-66
Bridge Rehabilitation




Above: Under Construction — South Abingdon Street
over I-395 Bridge Rehabilitation

Shirlington Circle South Rotary Bridge Rehabilitation

Resurfacing the concrete bridge deck, closing deck joints, repairing and repainting steel beams, adding protective concrete barriers to piers, replacing bearings, and upgrading adjacent guardrails. The bridge was built in 1973 and connects the southbound I-395 collector-distributor lanes and southbound Shirlington Road to North Quaker Lane at the I-395 Exit 6 interchange. Construction is scheduled to begin in fall 2023.

Estimated cost: \$6.8 million

In Design



Arlington Boulevard Safety Improvements

This project will make improvements along nearly a mile of Arlington Boulevard between Glebe Road and Fillmore Street. The improvements include constructing a raised median along Arlington Boulevard, adding eastbound and westbound dedicated left-turn lanes at Irving Street,

upgrading the traffic signal at Irving Street, extending the eastbound and westbound left-turn lanes at Fillmore Street, upgrading the traffic signal at Fillmore Street, extending the eastbound service road to connect existing driveways between South Old Glebe Road and North Jackson Street, extending the westbound service road to connect existing driveways between North Irving Street and North Jackson Street, and reconstructing portions of the shared-use paths on both sides of Arlington Boulevard. As part of the project, the following will be evaluated: potential new lighting between Irving Street and Fillmore Street, on-street parking between Garfield Street and Fenwick Street, and potential bus stop improvements. Construction is scheduled to begin in late 2028.

Estimated cost: \$31.39 million

North Old Glebe Road over North Glebe Road Bridge Replacement

A new bridge with a wider sidewalk on the eastern side and a new sidewalk on the western side will replace the bridge built in 1964. Construction is scheduled to begin in mid-2027.

Estimated cost: \$15 million

Below: Under Construction — I-395/Route 1 Southbound Exit 8C Bridge Repairs

